



TVU Nano Router 5G

Advantages

- △ 3 x 5G SIM cards, 200Mbps aggregated speed
- △ Built-in battery supports 3.5 hours working (5.5 hours standby)
- △ Industrial design, compact metal enclosure, high reliability
- △ Aggregate 4G/5G, satellite, microwave. Guarantee high bandwidth and reliability

5G multi-network aggregation router-a new generation of 5G mobile dedicated line.

5G multi-network aggregation router-a new generation of 5G mobile dedicated line

High-speed Internet access: multiple available links can be aggregated including 3 built-in 4G/5G modules, 1 external USB module, 1 network cable, 1 Wi-Fi

Flexible and portable: Built-in battery, weighs only 1.15 kg, can be either for portable use or mounted on a 1RU rack(fixed or on a truck) *

Efficient management: supporting cloud management platform, real-time monitoring and analysis, remote management configuration

Convenient access: provide 1 Wi-Fi hotspot and up to 2 Ethernet(LAN) ports **

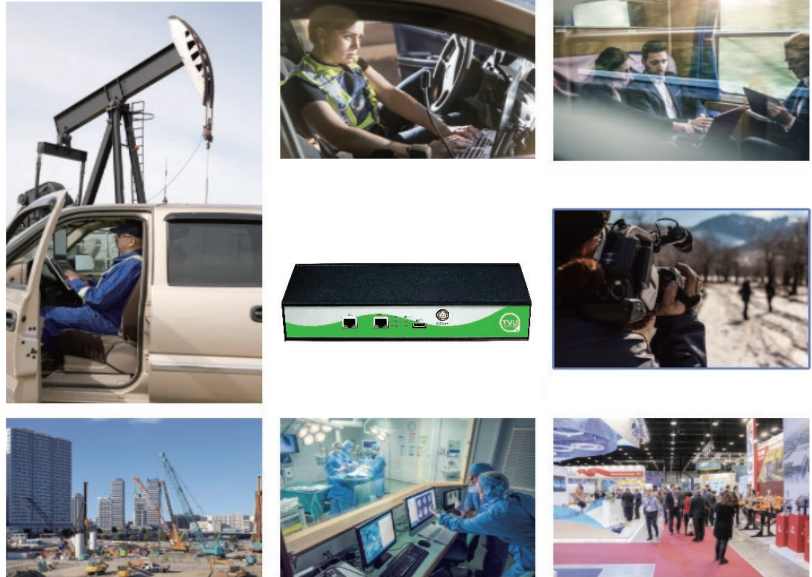
* rack is optional

** The WAN port can be configured as LAN port



Industry Use Cases

1. mobile live broadcast, remote production
2. emergency communication
3. 5G dedicated line



TVU Nano Router 5G Technical Specifications*

Supported 4G/5G

3 x 4G/5G

Data encryption

encryption

Built-in battery

3.5 hours working (5.5 hours standby)

Supported function

P2P, IP passthrough, QoS, DHCP, Wi-Fi Hotspot/AP

Support antenna

external antenna

Operating temperature

-20°C to 50°C

Supported protocol

TCP, UDP, ICMP; FTP, HTTP, IMAP, NTP, POP, RTP, RTSP, SMTP, SNMP, SSH, Telnet

Supported data connection

Up to 6 channels of bandwidth can be aggregated simultaneously: 3 x 4G/5G, 1 x USB 3.0, 1 x Wired Ethernet, 1 x Wi-Fi

Dimension

270mm × 107.5mm × 46.5mm

Transmission technology

IS+

Power input

12V 2A



www.tvunetworks.com
857 Maude Avenue, Mountain View, CA, 94043
+ 1.650.969.6732

*Specifications are subject to change.